



WINTER WARMER BREAKS

FIVE LUXURY NORFOLK LOCATIONS

January - March 2020



Escape to beautiful Norfolk this winter

Winter Warmer Breaks

Enjoy the crisp beauty of Norfolk this winter and explore open vast beaches, hidden country walks, fireside snuggles and glamorous city nights with exclusive offers at five luxury locations. From a country spa retreat to luxury self-catering on the coast, enjoy exceptional accommodation in historic locations.

We look forward to welcoming you and helping create lasting memories.



T&Cs: All offers are valid from 2 January–28 March 2020 and excludes half-term dates (17–28 February 2020). We reserve the right to withdraw these promotions at any time or add further date exclusions.

The Ffolkes | Hillington

ffolkes.org.uk 

Save up to 25% on a two-night bed & breakfast break including dinner on the first night.

	Courtyard room	Deluxe room
Sunday–Thursday	£180	£225
Friday–Sunday	£220	£250

Book online **ffolkes.org.uk** or call **01485 600210**

Prices based on double occupancy.

Two–night stay only.

Friday – Sunday is a combination stay of Friday and Saturday or Saturday and Sunday nights.

No further Norfolk Passport discount to be applied to the room rate.

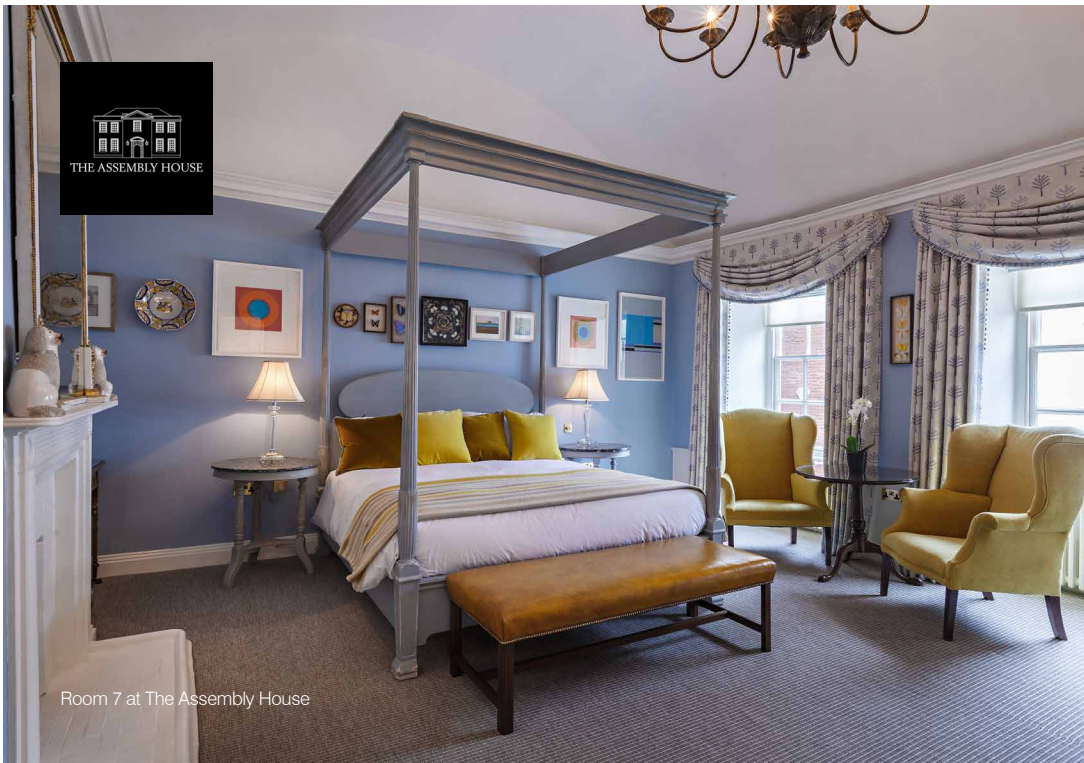
Includes one evening meal. Allocation of £20 per head, food only.

£10 dog surcharge, specific rooms only, check when booking.

Courtyard rooms sold on a first come first serve basis.



Deluxe room 2 at The Ffolkes



Room 7 at The Assembly House

The Assembly House | Norwich



Save up to 35% on a two-night getaway with afternoon tea.

	Double	Deluxe	Grand	Suite	House Suite
Sunday–Thursday	£250	£275	£300	£325	£400

Book online assemblyhousenorwich.co.uk or call 01603 626402

Prices based on double occupancy.
Two-night stay, Sunday - Thursday only.
No further Norfolk Passport discount to be applied to the room.

1 x Afternoon tea for two.
Served from 12pm – 5pm.
Does not include Champagne afternoon tea.

Byfords | Holt

byfords.org.uk  

Two-night getaway with breakfast,
afternoon tea and dinner on the first night.

	Price	Saving
Sunday–Thursday	£265	£130
Friday–Sunday	£290	£165

Book online **byfords.org.uk**
or call **01263 711400**

Two-night stay only.

Friday – Sunday is a combination stay of Friday and Saturday or Saturday and Sunday nights.

Bedrooms are on a first come, first served basis.

No further Norfolk Passport discount to be applied on the room rate.

Includes one evening meal. Served from 6pm. Allocation of £25 per head in the Café, food only.

Afternoon tea on day of choice. Served 3–5pm.



Room 3 at Byfords, part of a recent rooms refresh



Spa suite at The Pigs

The Pigs | Edgefield

thepigs.org.uk 🛏️ 🍴 🐕

Two-night bed & breakfast getaway including dinner on the first night. Also, save 20% on all spa treatments!

	Double room	Original spa room	Spa suite
Price	£240	£295	£350
Saving	£110	£145	£150

Book online thepigs.org.uk or call **01263 587634**

Prices based on double occupancy.

£30 reduction for single occupancy.

Two-night stay, Sunday – Thursday only.

No further Norfolk Passport discount to be applied.

Includes one evening meal. Served from 5pm.

Allocation of £25 per head, food only.

£25 dog surcharge, selected original spa rooms only.

20% discount applicable to spa treatments during your stay dates only.

Beachside Sheringham



Luxury self-catering breaks on the coast...

Save 40% with exclusive winter rates!

Monday–Friday	Apt 1	Apt 2	Apt 3	Apt 4
December–March	£240	£288	£264	£297

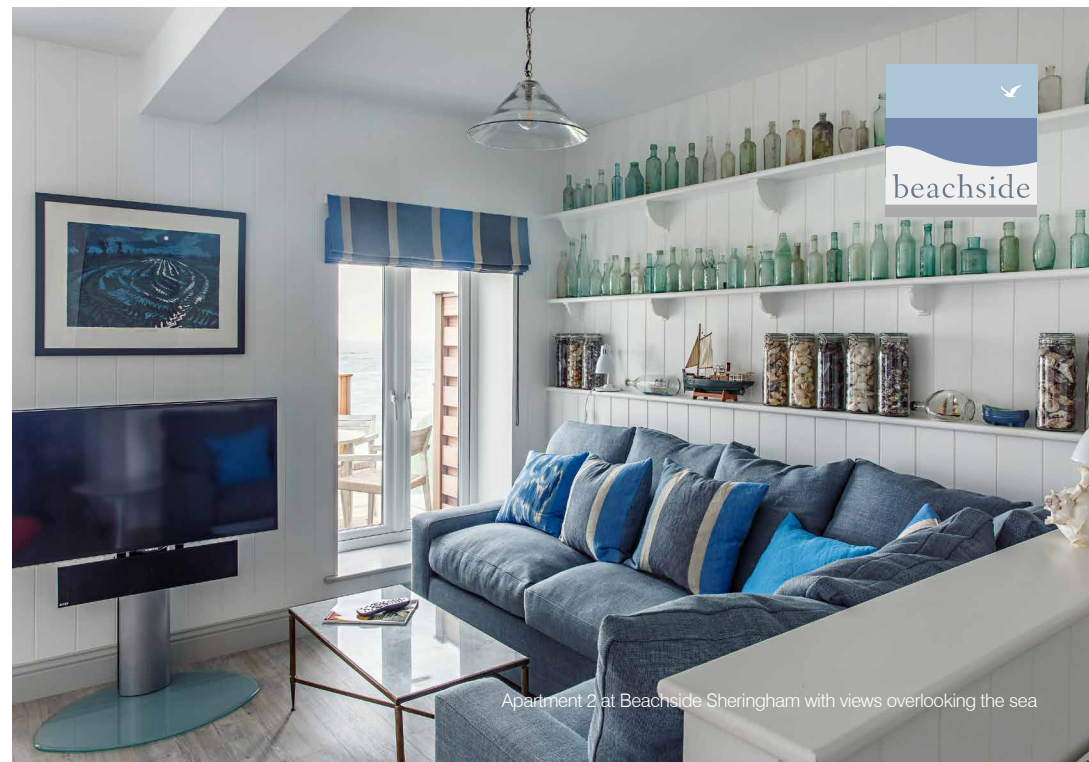
Book now by calling **01263 821855** or online at **beachsidesheringham.co.uk**

Monday–Friday stays only
(four nights).

Only Apartment 4 is dog-friendly.

10% Norfolk Passport discount can be applied
to weekend stays.

No further Norfolk discount applicable.



Book a Norfolk Spring Break April – June 2020

As we look forward to warmer temperatures, remember to book a Norfolk Spring Break on your departure.

You'll see even more exclusive offers, rewards and incentives from our iconic brands.

Keep an eye on our websites for more information, and if you haven't already, visit norfolkpassport.com for exclusive perks and the latest partner information.



A photograph of Norwich Castle, a large stone building with many windows, under a clear blue sky. A black metal fence is in the foreground, and a large tree is on the right. A glass-enclosed staircase is visible on the left. A dark blue rectangular box with a white border is centered over the image, containing the text 'NORFOLK PASSPORT'.

NORFOLK
PASSPORT

Norwich Castle

Join Norfolk Passport and save across leading
Norfolk experiences, including 10 Norfolk museums!
Sign up is fast, free and easy.

norfolkpassport.com